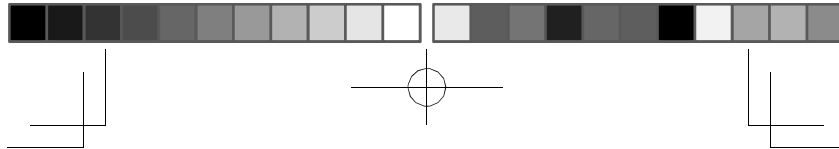


USB 3.0 Single/Dual Display Docking Station

Quick Installation Guide



1. Installing the Driver

Caution: DO NOT connect the adapter to your computer before installing the provided driver.

Insert the provided CD into a computer's disc drive and the **AutoPlay** will be launched automatically. If the **AutoPlay** does not appear, locate and double-click on the **Setup.exe** file in the driver folder.

For Windows® Vista / Windows® 7 / Windows® 8 users:

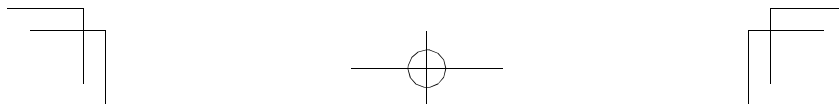
- A. Please click **<Run Setup.exe>** to execute the installer program.
- B. If you encounter a **User Account Control** dialog box when attempting to install a program, enter an administrator password or click **<Allow>** / **<Yes>** to start the installation.
- C. The **License agreement** will be prompted. Click **<I Accept>** to start the driver installation.
- D. Click **<Yes>** to restart or **<No>** to manually restart later, if a promoting to restart computer message appears.

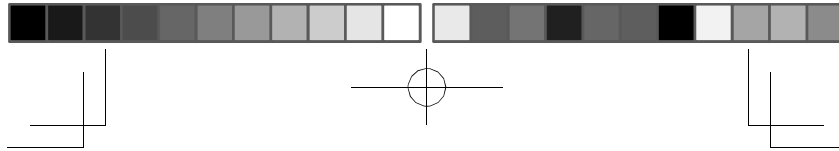
For Windows® XP users:

- A. The **License agreement** will be prompted. Click **<I Accept>** to start the driver installation.
- B. Click **<Yes>** to restart or **<No>** to manually restart later, if a promoting to restart computer message appears

2. Making the Connection

- A. Connect the Docking Station to a DVI monitor (Dual Display Docking Station to a HDMI® or/and DVI monitor) and a computer. The screen may temporarily go black or flash during this process.
- B. Connect the USB peripherals, such as Ethernet, speaker and microphone to the corresponding connectors.





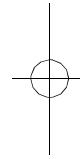
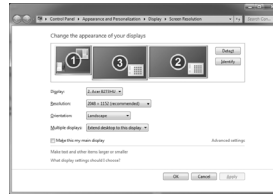
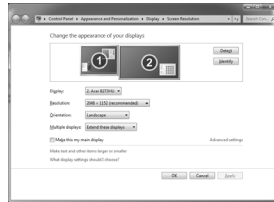
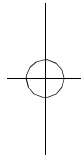
3 Multi-monitor configuration

An extra DVI monitor can be connected through the Docking Station (HDMI[®] and DVI monitors for Dual Display Docking Station) if one monitor is already connected to the PC directly. Once the extra monitor is connected, it can be configured to use either "Mirror mode", "Extended mode" or be the Primary display.

Position the mouse anywhere on the **Windows Desktop**, right-click and select <**Screen Resolution**> on Windows[®] 7/ Windows[®] 8, **Personalize > Display Settings** on Windows[®] Vista or **Properties > Settings** on Windows[®] XP.

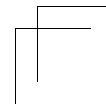
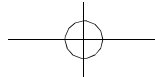
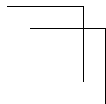
Single Display Docking Station

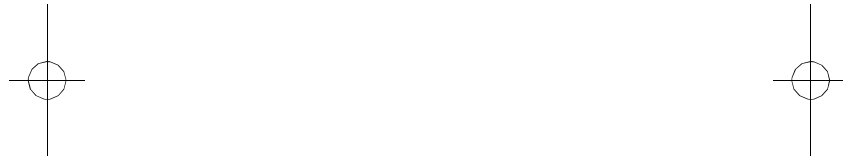
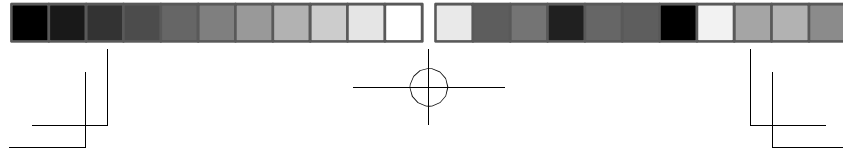
Dual Display Docking Station



Alternatively, click <  (utility icon) > in the **Windows System Tray**, and then select **DisplayLink Manager** or **Video Setup**.

This Quick Installation Guide describes only the basic instructions on installation. For more information, please refer to the **User's Manual** burnt in CD.





USB 3.0 Single/Dual Display Docking Station
Quick Installation Guide

